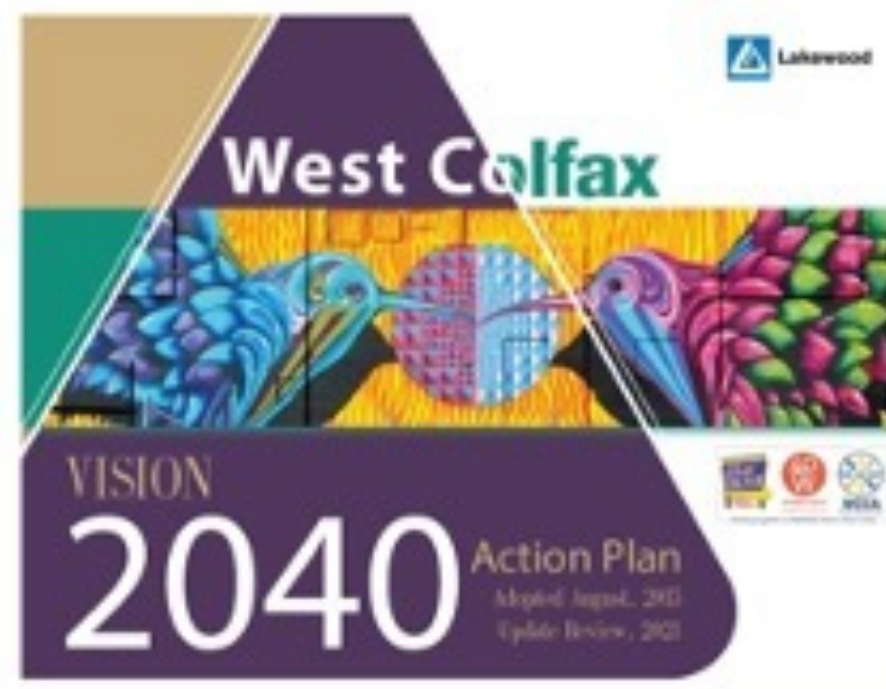


creative place-making





**28**

**CONCEPTS & MATERIALS PHASE**

**Designing Public Spaces & Creating a Sustainable Future**

As a responsible organization, we are committed to creating a sustainable future for our employees, our customers, and our communities. We are committed to creating a sustainable future for our employees, our customers, and our communities. We are committed to creating a sustainable future for our employees, our customers, and our communities.

**Designing Public Spaces**

- 1. Public Spaces Overview
- 2. Sustainable Public Spaces
- 3. Public Art
- 4. Sustainable Public Spaces
- 5. Public Art
- 6. Sustainable Public Spaces

**1**

- 1. Sustainable Public Spaces
- 2. Public Art
- 3. Sustainable Public Spaces

**2**

- 1. Public Art
- 2. Sustainable Public Spaces

**3**

- 1. Sustainable Public Spaces
- 2. Public Art

**29**

**1**

- 1. Sustainable Public Spaces
- 2. Public Art
- 3. Sustainable Public Spaces

**2**

- 1. Public Art
- 2. Sustainable Public Spaces

**3**

- 1. Sustainable Public Spaces
- 2. Public Art

**4**

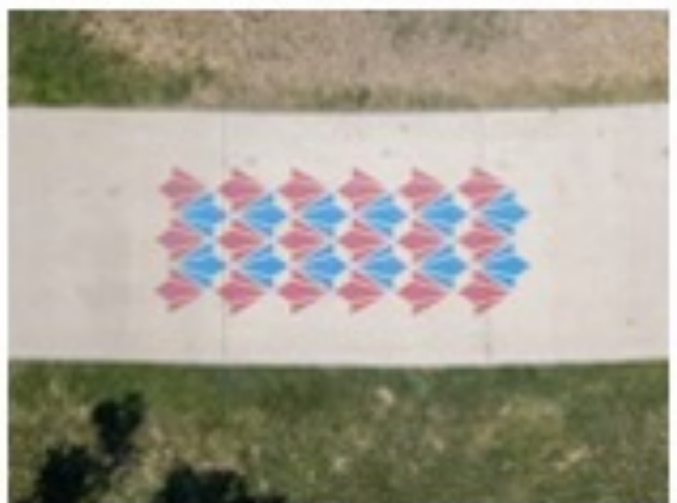
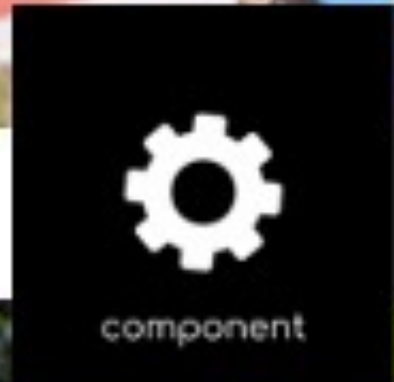
- 1. Sustainable Public Spaces
- 2. Public Art

**29**



19 September 2023





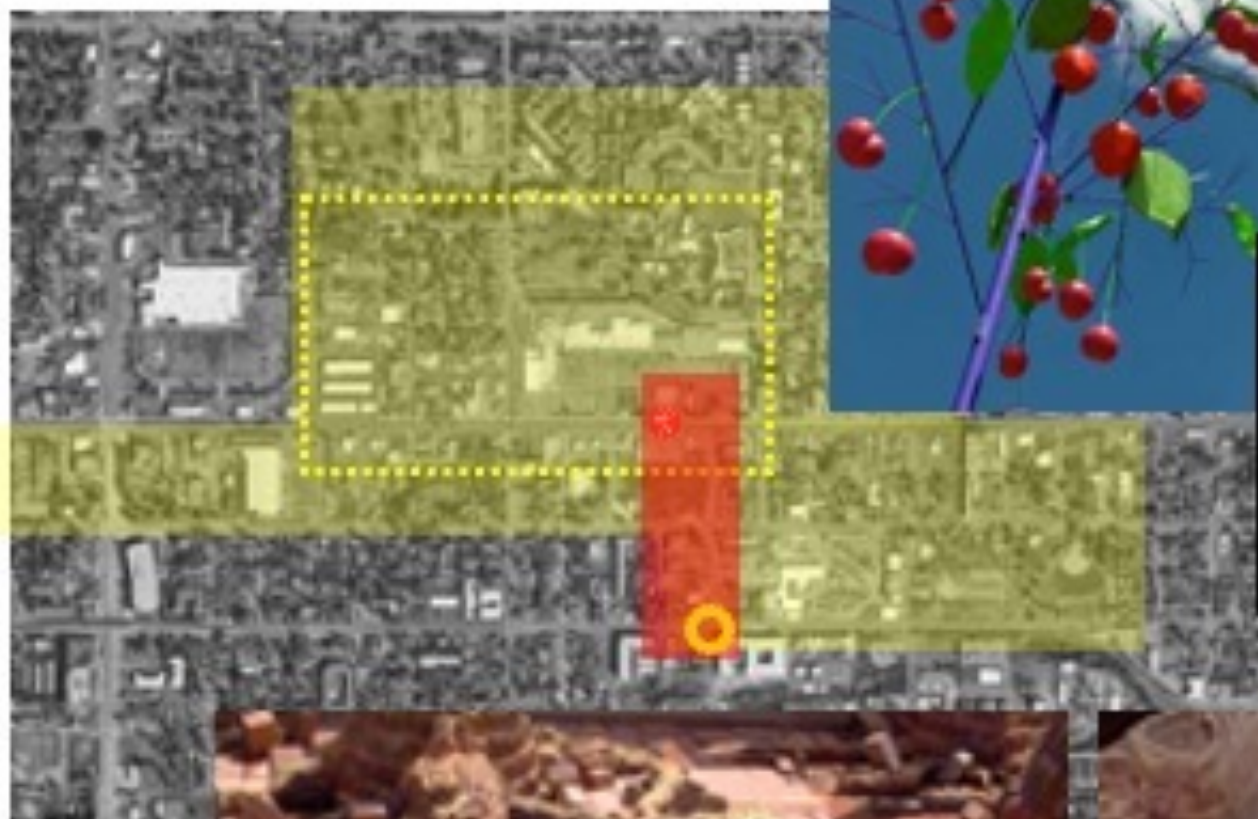








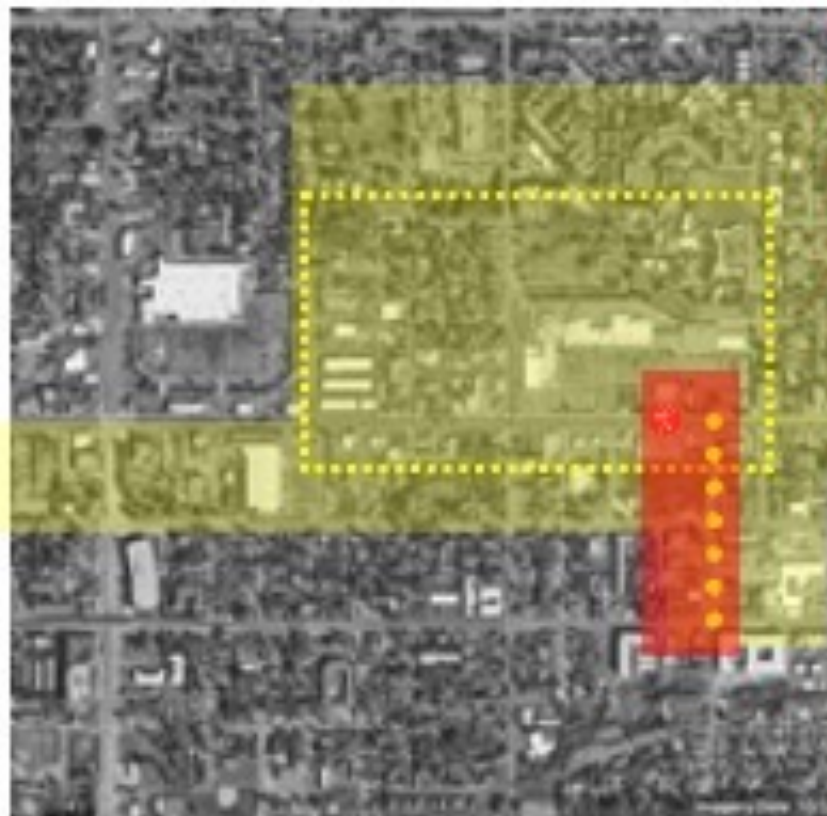
19 September 2023



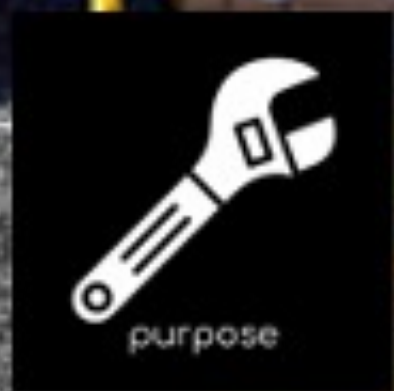
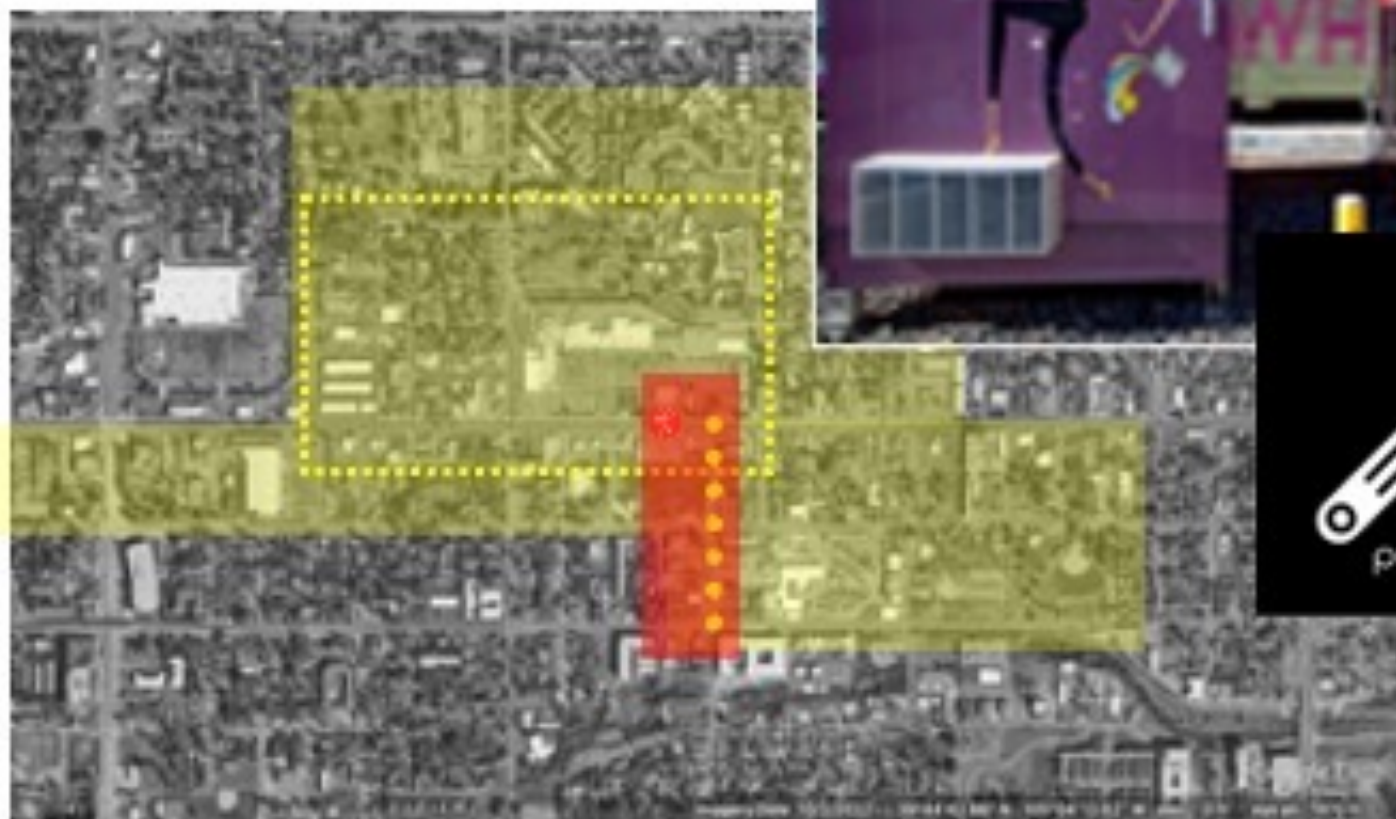


19 September 2023



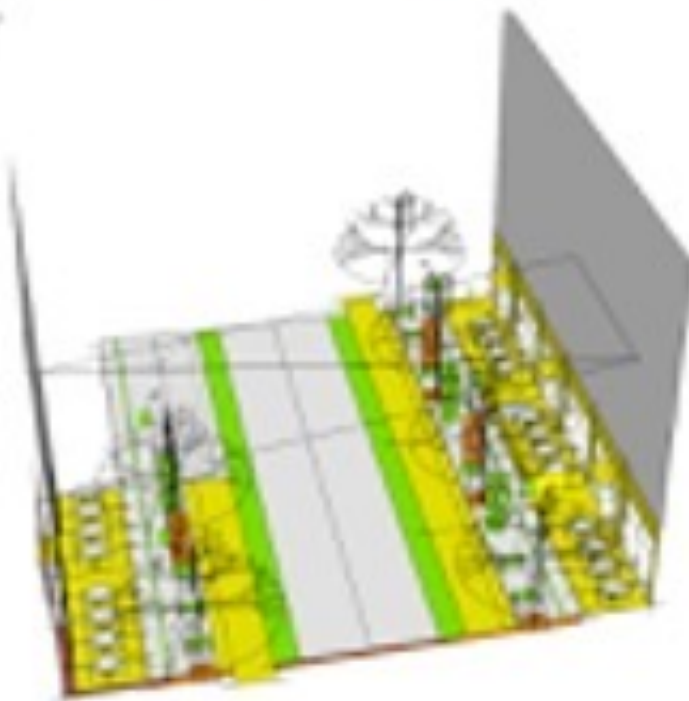
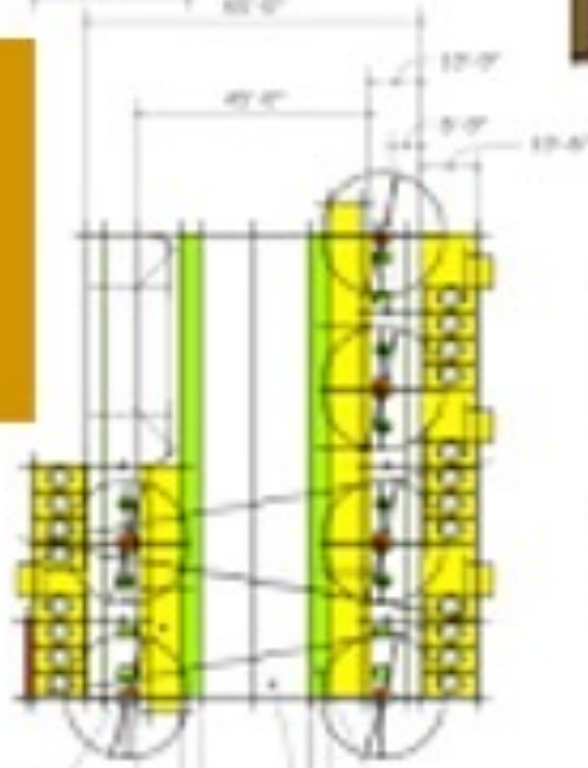
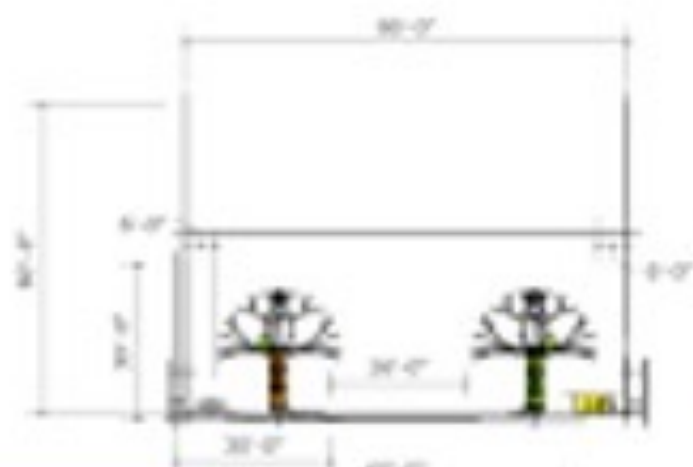
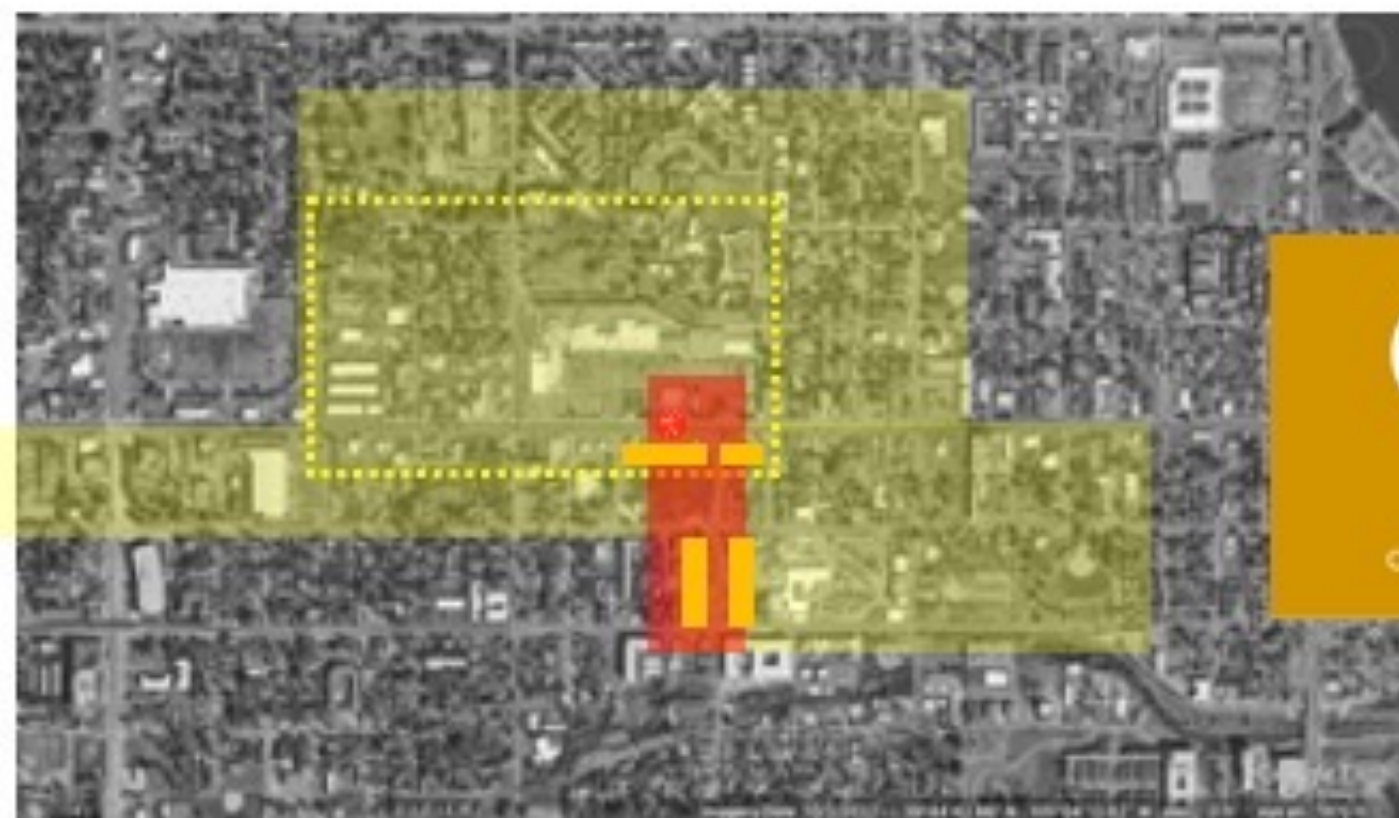


19 September 2023





What's next?



setting 8x24 parallel  
**ideate**  
CONCEPT DESIGN ARCHITECTURE

