

# ART + SCIENCE + ACTION Partnerships

---

Lisa Schwartz, CU Boulder Office for Outreach & Engagement, program co-lead

Patrick Mueller , Control Group Productions, cohort member

Susan Atkinson, CU Boulder Environmental Design, cohort member

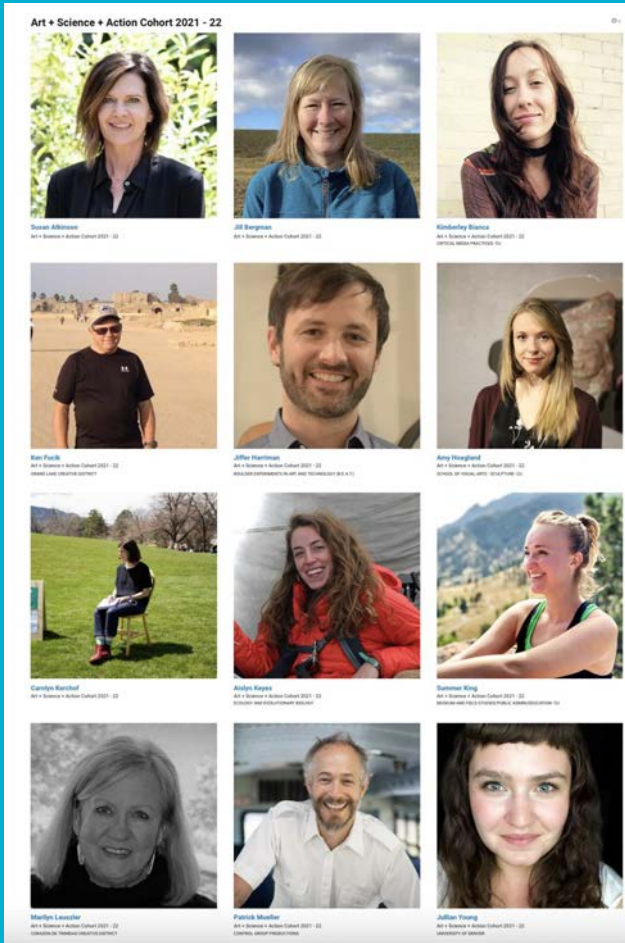
[bit.ly/art\\_science\\_action](https://bit.ly/art_science_action)  
lisa.h.schwartz@colorado.edu

Co-organized by the CU Boulder Office for  
Outreach and Engagement  
Boulder County Arts Alliance (BCAA).

# Artists, scientists and communities partner to co-design projects related to Colorado-wide environmental issues

Through this program, CU Boulder graduate students and artists and arts organization leaders from the community increase their knowledge and experience of how to facilitate art + science partnerships that catalyze community action on **Colorado place-based environmental and social issues related to climate change.**

Cohort participants receive mentorship from artists, scientists and community-engaged scholarship professionals through workshops and consultation, and small stipends for projects.



# 21-22 cohort

## Creative Districts

- Marilyn Leuszler, Corazón de Trinidad
- Ken Fucik, Grand Lake
- Jill Bergman, (artist) Steamboat Springs

## Front range communities and universities:

- Jiffer Harriman, B.E.A.T
- Jullian Young, DU
- Patrick Mueller, Control Group Productions
- Carolyn Kerchoff

## CU Boulder

- Aislyn Keyes, E-BIO
- Susan Atkinson, Environmental Design
- Amy Hoagland, MFA, Sculpture
- Kimberley Bianca, Media Studies
- Summer King, Museum Studies

<https://outreach.colorado.edu/program/art-science-action-cohort/>

### Program Co-Leads



**Charotta LeSasso**  
Program Co-Lead  
BOULDER COUNTY ARTS ALLIANCE



**Lisa Schwartz**  
Program Co-Lead  
OFFICE FOR SUSTAINABLE ENGAGEMENT

### Program Advisory Members

Cohort members will receive mentoring from the groups listed below.

### Art + Science Guidelines Co-Leads



**Patrick Chandler**  
Art + Science Guidelines Co-Lead  
BIOMIMICRY.ORG



**Eriqsonnelle Vital**  
Art + Science Guidelines Co-Lead  
HARV.EDU

### Program Advisors



**Anyssa Bhattacharya**  
Program Advisor  
ANYSASSA@GMAIL.COM | 415.440.8418 | 1000 UNIVERSITY AVENUE, SUITE 1000, BERKELEY, CA 94702



**Cassandra Brooks**  
Program Advisor  
CASSANDRABROOKS@GMAIL.COM | 303.440.1111 | 1000 UNIVERSITY AVENUE, SUITE 1000, BERKELEY, CA 94702



**Lyllie Chen Shih**  
Program Advisor  
LYLLIE@CHENSHIH.COM | 415.863.7300 | 1000 UNIVERSITY AVENUE, SUITE 1000, BERKELEY, CA 94702



**Judith Gilson**  
Program Advisor  
JGILSON@GMAIL.COM | 415.863.7300 | 1000 UNIVERSITY AVENUE, SUITE 1000, BERKELEY, CA 94702



**Maria Kim**  
Program Advisor  
MARIAKIM@GMAIL.COM | 415.863.7300 | 1000 UNIVERSITY AVENUE, SUITE 1000, BERKELEY, CA 94702



**Beth Olson**  
Program Advisor  
BETH@OLSONDESIGN.COM | 415.863.7300 | 1000 UNIVERSITY AVENUE, SUITE 1000, BERKELEY, CA 94702



**Jorge Perez Gallego**  
Program Advisor  
JPEREZ@GMAIL.COM | 415.863.7300



**Dhanish Prasadani**  
Program Advisor  
DHANISH@GMAIL.COM | 415.863.7300

Example project photos:



Co-leads and mentors:

[bit.ly/art\\_science\\_action](https://bit.ly/art_science_action)

The program aims to:

- **Build our networks in order to work together locally, and regionally to grow our impact on interconnected social and environmental issues.**
- Put Art & Science Partnership Guidelines to work
- Create avenues for CU resources/people to connect with Colorado-wide issues.
- Support growth in participants' capacities with equity-oriented participatory practices.

Art + Science + Action Cohort members build and facilitate project teams of scientists, artists and community members. Members attend monthly workshops, meet with advisors, received up to 1k for community project.

*“It was a great opportunity to talk and collaborate with people outside of academia and get a fresh perspective on science issues relevant to community members... The diversity of thought that artists and scientists bring to such a partnership has the power to take environmental issues out of a lab and make them more human, more personal,”* **Vishal Ray, aerospace engineering PhD**

*“The cohort and resulting collaboration helped launch me into the work I've been dreaming of doing for years. I now have access to an incredible extended community of artists and scientists interested in this work. Perhaps most importantly, I now have the confidence and connections to participate in this challenging, rewarding work of partnering the arts and sciences for community action.”* **Maren Waldman, dancer and performance artist**

# Art Science Partnership Guidelines are for:

---

- Communities and organizations who hope to catalyze place-based action on environmental and social justice issues through art and science partnerships need support.
- Especially for project leaders and creative strategists guiding the partnership process.

*They were developed in 2020-21 by Patrick Chandler and Emmanuelle Vital through resource review and interviews with 24 practitioners of community-engaged work.*





## Guiding Principles:

- Enable an organic process
- Prioritize the relationship
- Have patience
- Work toward consensus
- Address power and status
- Include the head and the heart
- Be authentic
- Ensure knowledge and action are place-based



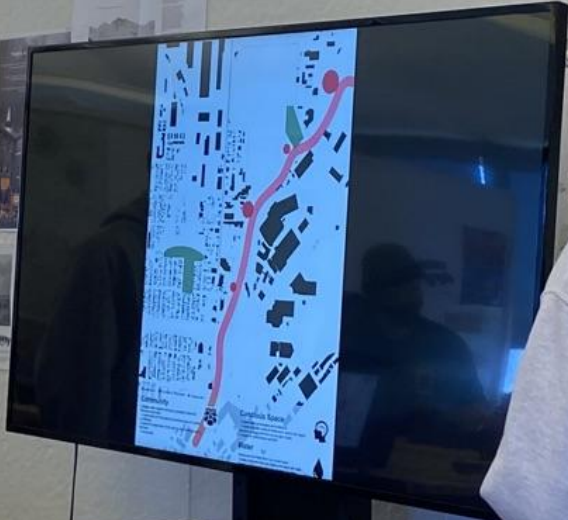
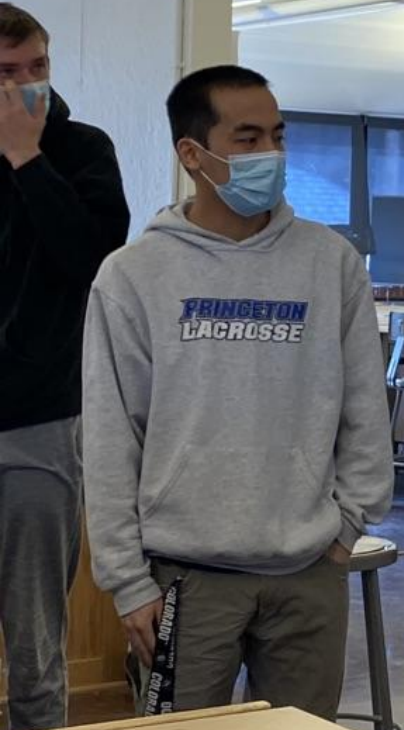
# Connecting on a “Point of Wonder”

“points of wonder,” a key idea in the [Art + Science Partnership Guidelines](#) generated by Marda Kirn of [EcoArts Connections](#).

Artists, scientists and community members all have a point of wonder, and that sharing a common point can help level out power and status and bring people together as equal investigators of an idea.



EXIT



Structure and History of Front Range Tribes

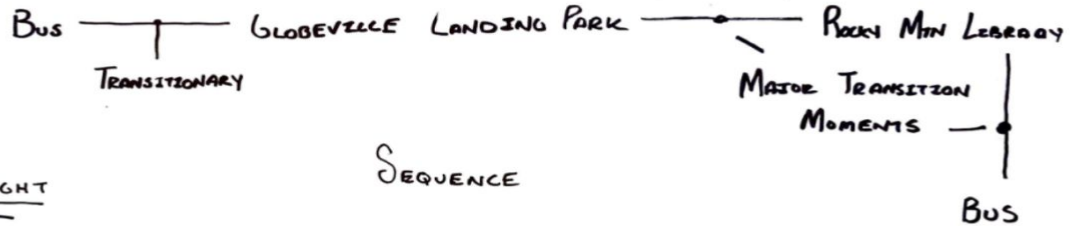
Archaeological Country Park

Archaeology Museum

—

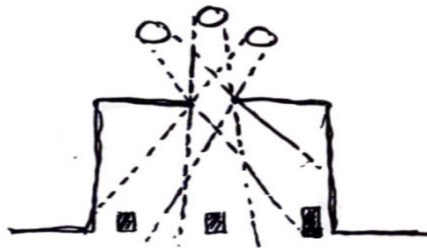


KEY MOMENTS :

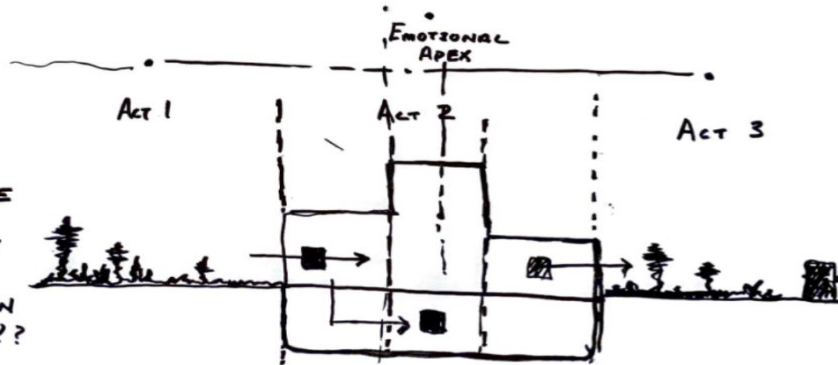


DARK TO LIGHT

DINING SPACE → RATIONS → DINING SPACE      EXCHANGE POINT



- 3 MOMENTS IN SAFEHOUSE
- HIGHLIGHTED BY DAYLIGHT
- WATER FILTRATION, CERTAIN CHARACTERS, AUDIENCE??











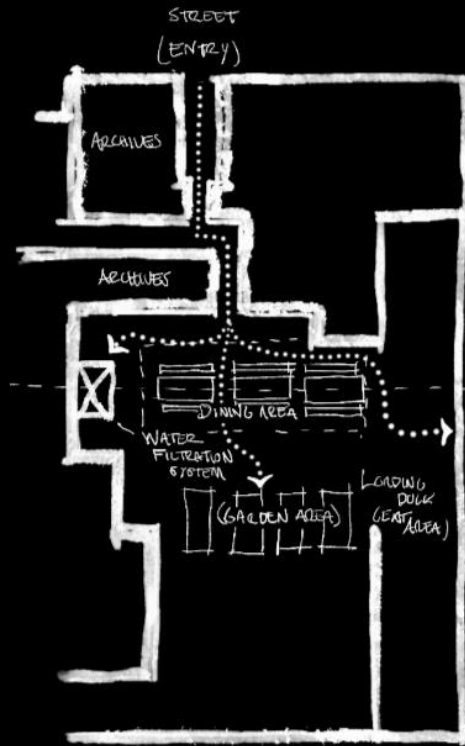




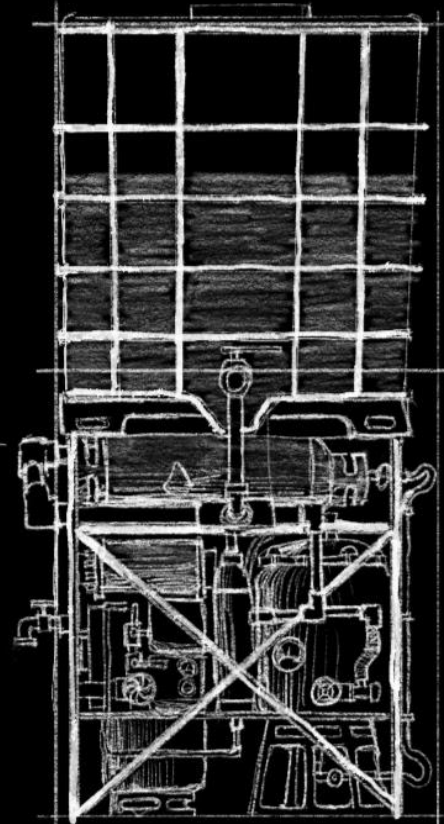




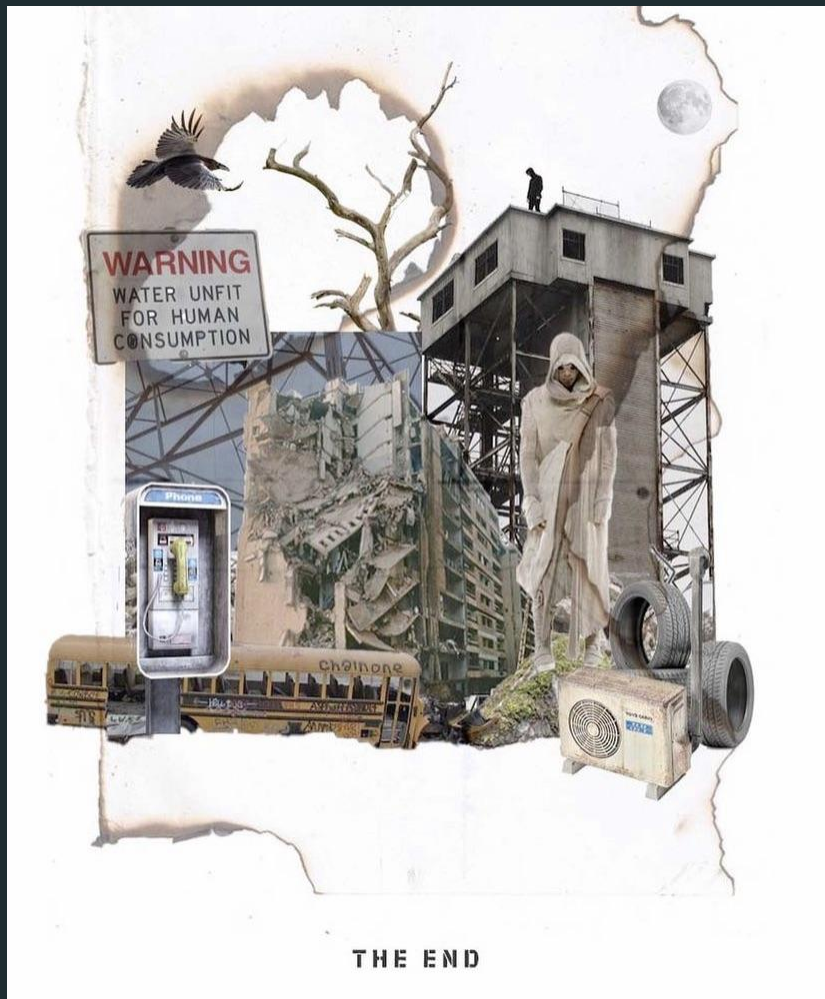
# THE END



SAFE HOUSE PLAN 



WATER FILTRATION SYSTEM



THE END































CLEAN



BUNK  
HOUSE  
→







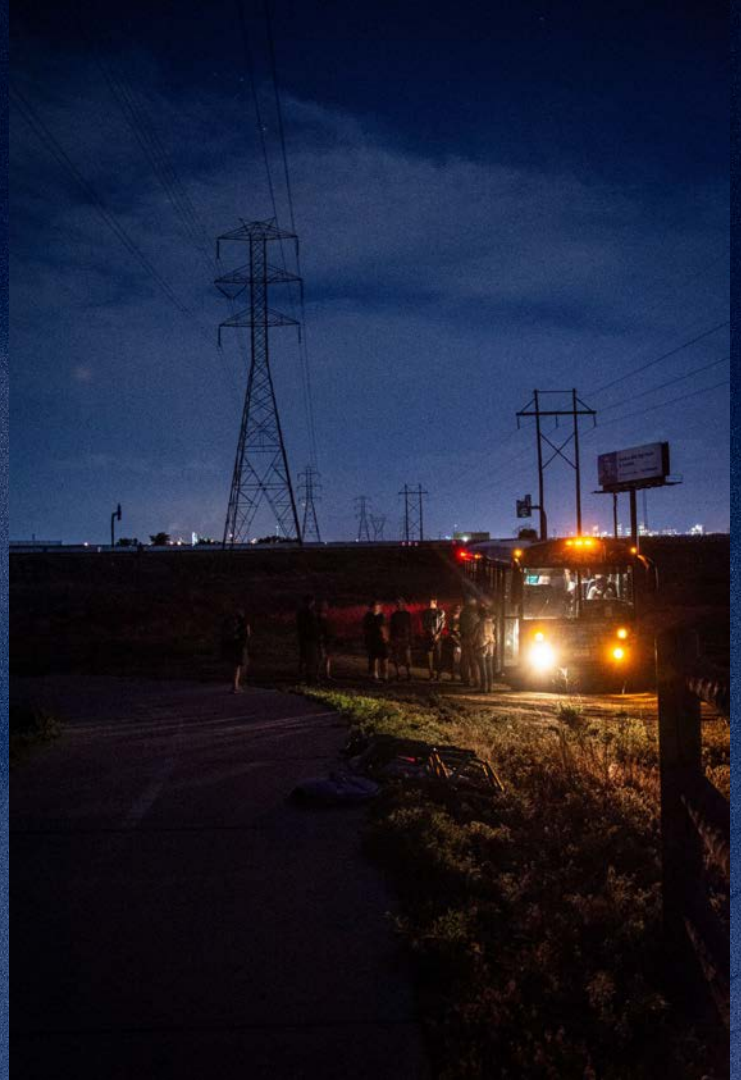












# ~~THE END~~

A BUS TOUR OF DENVER'S CLIMATE FUTURE

JUNE 4 - JULY 31, 2022